

SPECIAL SERVICE OFFER



Consulting

Analyzing your specific needs, planning customized machine layouts, consulting you on process optimizations or financing... Whatever you need, we are happy to offer a comprehensive carefree package for you.



Worldwide Support

Our consultants and service technicians operate worldwide to ensure the best possible long-term support for your production and equipment, from machine building and installation to maintenance and operation.



Technical Online Support

We are not only your machine and spare parts supplier, but we are also your best source for technical support. Our technical support is available to you by phone or e-mail for any questions and problems.



24/7 Support Hotline

Excellence in customer service is of paramount importance to us. Consequently we have established a service hotline which is available 24 hours a day, seven days a week.



Repair & Refurbishment

To reduce downtime and costs, we offer a special exchange and repair program. Simply send in your broken machine part and we'll take care. In some cases, we offer refurbished machine parts in an exchange program.



OEM Spare Parts

We have a wide range of spare parts in stock with a high availability for standard machines. Our OEM parts have been developed exclusively for our machines and customers and thus are specially fitted to your needs.



Online Training

Online training helps to improve and optimize your operation and manpower. Technical issues can be solved in a practical way.

ABOUT THE COMPANY

The German company Power-Heat-Set GmbH supplies the carpet and textile industry all over the world with machines and components for yarn treatment. Power-Heat-Set stands for field expertise, innovation, service and quality. For over fifty years the products of Power-Heat-Set have been considered worldwide as a guarantee for high quality and efficient production in the field of yarn finishing and have established Power-Heat-Set as a successful player in the global carpet and textile industry.

All of Power-Heat-Set's equipment is manufactured by highly-qualified technicians at the German based headquarters in Töging. There is a team of mechanics and technicians available worldwide for installations and service. Power-Heat-Set's Research & Development department continuously works on optimizations to bring the machines to the next level. The team focuses on bringing advantages to the customer's production process regarding quality, runability, productivity, energy saving and handling.



"Over 50 years of experience in the carpet yarn and textile industry and over 1.000 machines installed so far: This is Power-Heat-Set. With our vast knowledge and experience in the worldwide carpet yarn industry we offer the products to fit your specific needs."

CEO, Mr. Marcus Köhler



"Our engineers are constantly improving quality, operability, productivity, sustainability and handling to provide innovative technology and customized solutions which means our equipment is always state-of-the-art and meets the highest standards."

CTO, Mr. Kurt Frank



power-heat-set

The perfect solution for every customer

For more information on Power-Heat-Set's variety of heatsetting machines and services or in case of any other questions don't hesitate to contact us!

mail@power-heat-set.com
phone: +49 86 31 / 393 - 480



power-heat-set

Power-Heat-Set GmbH
Amperstraße 4
84513 Töging am Inn
GERMANY
Phone: +49 (0) 8631 393-480
Fax: +49 (0) 8631 393-580
E-Mail: mail@power-heat-set.com
Internet: www.power-heat-set.com

power-heat-set

Power-Heat-Set of America, Inc.
409 North Park Drive / Suite D
Dalton, Georgia, 30720-2625
USA
Phone: +1 (706) 5297199
Fax: +1 (706) 5297351
E-Mail: mail@power-heat-set.com
Internet: www.power-heat-set.com

GERMAN 
Technology



GVA AT A GLANCE

The GVA heatsetting machine offers proven reliability, flexibility and productivity in continuous heatsetting. It utilizes superheated steam with the full capacity of heatsetting natural or synthetic fibers.

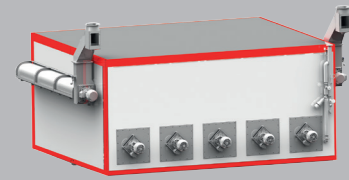
The six channel configuration provides unmatched versatility for the customer. The GVA essentially provides six machines in one energy efficient package. Not only is the GVA a perfect solution for

running high volumes of uniform production efficiently, but the GVA also provides the flexibility to run six individual lot sizes whilst offering the ability to process frieze or straight yarn on any position.

Our modular system of GVAs gives our customers the possibility to choose the machine that meets their individual demands:

GVA 4.0+ The economic model

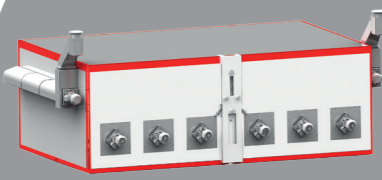
Efficient production combined with low investment.



UP TO 7 TONS PER DAY

GVA 5.0+ The standard model

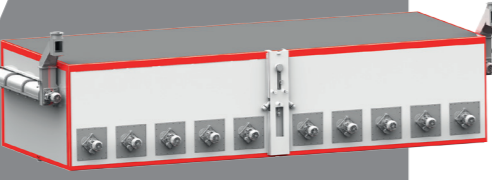
Decades of global experience combined with modern design and functionality.



UP TO 10 TONS PER DAY

GVA 8.0+ The maximum production model

Highest level of daily production combined with next generation technology.

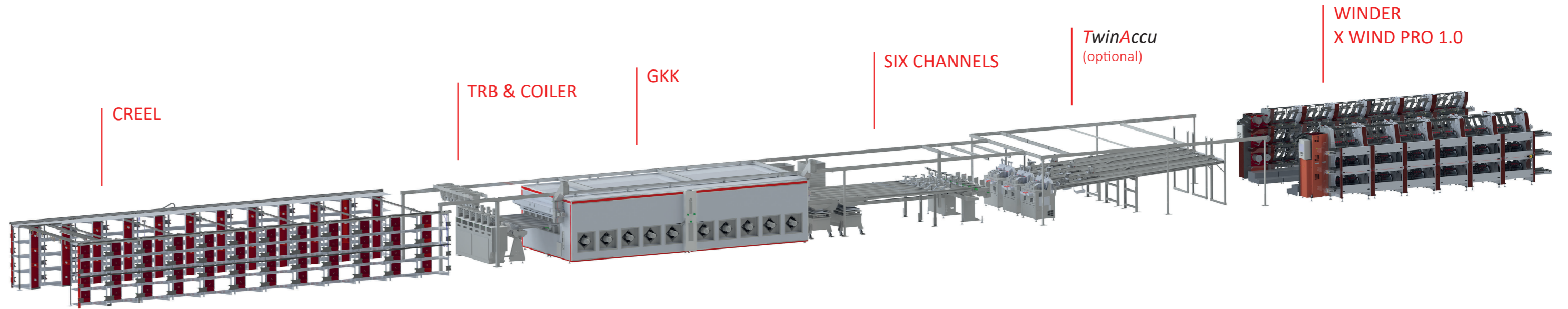


UP TO 15 TONS PER DAY

TECHNICAL DATA

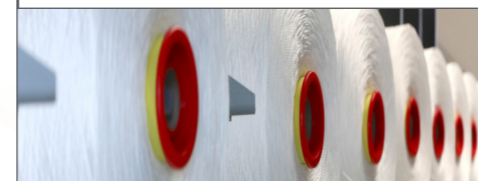
	GVA 4.0+	GVA 5.0+	GVA 8.0+
Max. ends on creel	96	96	96
Max. yarn speed overfeed	600	600	600
Straight yarn	✓	✓	✓
Frieze yarn	✓	✓	✓
Channels	6	6	6
Accumulator	optional	optional	optional
Winder max. speed (m/min)	700	700	700
Max. belt density (g/m)	185	185	185
Max. production (tons/day)	up to 7	up to 10	up to 15

MACHINE DESIGN



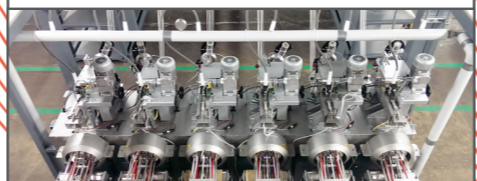
Creel

- Optimal ergonomic design and easy handling
- Locking system for mandrels ensuring safe bobbin positioning
- Thread sensor with Quick Stop in the event a yarn end should break
- Anti static design
- Variable set-up options
- Equipped for all bobbin forms
- Optional SpliceSet available



TRB & Coiler

- Combined solution for straight set yarn and frieze
- Good accessibility
- Easy to operate
- Pneumatic pressing lever improves the consistency of frieze
- Special perforations TRB steam channel enable uniform perfusion of yarn
- Quick and easy change from frieze to straight yarn
- Wide variety of texture levels
- An air injector enables easy threading
- Coiler yarn deposit on the belt can be either a circle or a figure eight
- Protection against yarn jam through sensors (optional)



GKK

- Computer-controlled dew point regulation with DewCap sensor (steam control)
- Range of temperature for heatsetting between 115-220 °C
- New design of prezones and entry/exit windows for minimized condensation and potential of condensate drops on yarn
- Temperature monitoring on each heatsetting channel
- Energy saving design



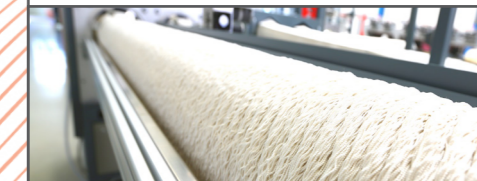
Six channels

- Maximum flexibility
- Possibility to process different specifications (frieze, color, etc.) at one time
- High efficiency factor when yarn breaks occur (5/6ths of machine capacity keep on running)
- Quick yarn break removal
- Optimal yarn cooling



TwinAccu

- Quick and easy to thread
- Variable length of storage depending upon the modular design (3 m, 6 m, 9 m)
- Storage capacity in average 45-60 minutes with 6 m
- Yarn tension is achieved with the help of the tension generator resulting in improved yarn separation over rollers, eliminating sliding friction and shiny spots
- Smooth and continuous contact pressure
- Sliding plate with special high-tech coating
- Pneumatic pressing lever improves yarn transport



X Wind Pro 1.0

- Quick thread up and doffing (down to 25 sec.)
- Yarn speed up to 700m/min
- Accurate bobbin build-up and excellent bobbin quality by innovative servo drive system
- Weight control
- Two separate winding units, thus no complete production stop in case of maintenance or malfunction
- For more details see our winder brochure

